

DIMENSIONS



SPECIFICATIONS

X-ray Source	High frequency generator, rotating-anode X-ray tube
X-ray Detector	Amorphous silicon TFT flat panel detector
Bore Size	650mm
Image Acquisition	Single scan, 360° rotation
FOV	Transaxial 260mm, length 165mm
Software Function	Patient Management, system control and image acquisition, 3D Cone-Beam tomography reconstruction, DICOM 3D viewer
Power	AC Power 220-230 V~ / 3.5 kVA, 50/60 Hz
Weight	670kg



PREMIUM PERFORMANCE FOR ADVANCED DIAGNOSTICS
CONE-BEAM CT

Brand-New Artificial Intelligent Technology / Largest Bore and Field of View
High resolution CT for COVID-19 Diagnosis



www.benetecmed.com | www.benetecmed.nl
Tel +32 (0)14 37 79 20 | E-mail info@benetecmed.com

Made in KOREA

Phion 2.0
NFR-BR-005A, Rev.1

MAIN FEATURES

AUTOMATIC TABLE

It can be used with an automatic table that can slide in and out of the bore. (See picture below)

EASY INSTALLATION

No transformer required. With one wall outlet, it can be installed and used in any shielding facilities or operating room.

LARGE BORE & FIELD OF VIEW

A scan of any body part is possible with offset-detector geometry

SCAN TIME

Fast scan time with a short reconstruction time.

LOW DOSE

Radiation dose is 20% of the normal MDCT, which reduces the burden of radiation exposure to patient.



Large bore size with offset-detector geometry allows to scan various anatomical area including L-spine, Shoulder, Hip, etc.



Hip

Shoulder

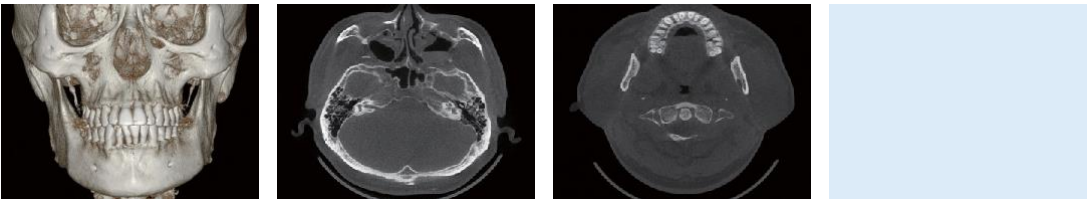
C-Spine

L-Spine

IMAGES

High resolution Cone-Beam CT for spine, Head & Neck, Extremity, Lung and Arthrography

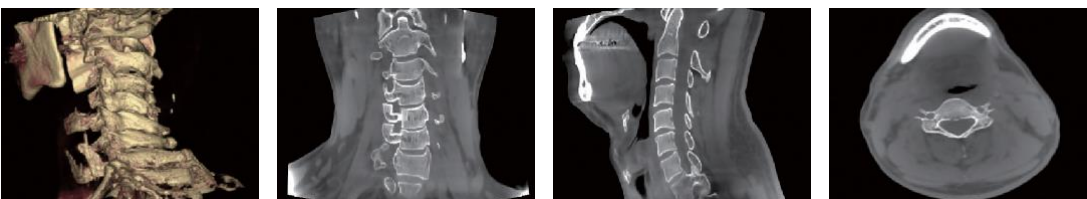
SKULL



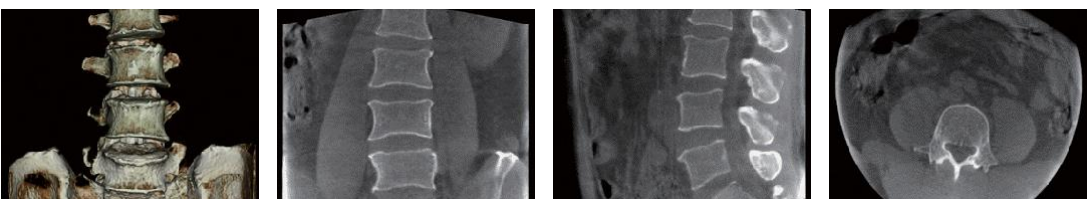
SHOULDER



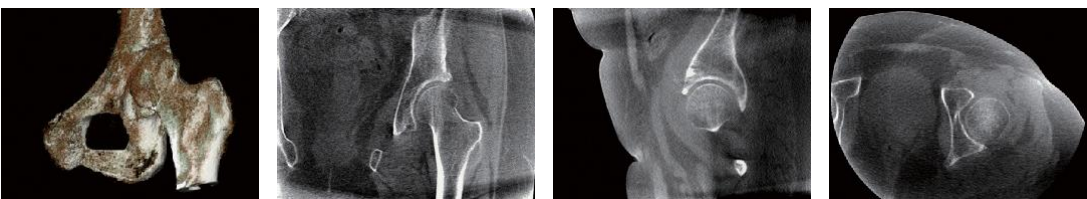
CERVICAL SPINE



LUMBAR SPINE



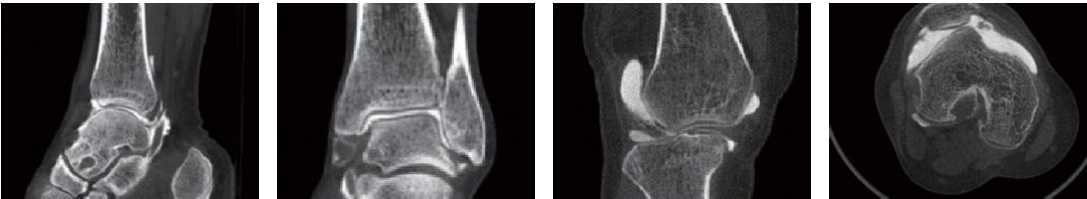
HIP



EXTREMITIES



CT ARTHROGRAPHY



SPECIAL FEATURE

Phion 2.0 Mobile CT
for COVID-19 Pneumonia

